



HIVE
WORLD NZ LTD



2023 Product Catalogue

www.hiveworld.co.nz



PERSONAL SERVICE –

“Looking after our customers in the way we would want to be treated” is a cornerstone of our business.

About us

As we enter our 7th year of business we would like to thank you, our customers, for your support and the information and experience you have shared with us over these often turbulent times.

We began with the Honey industry riding high on the Manuka wave and crashing to the depths with new standards and drastic changes that brought many beekeepers to their knees. It has been a rocky ride but there has been so much to learn from the experience.

Our original business cornerstone remains unchanged – **“to look after our customers in the way we would want to be treated.”** We thank you for your support of our ideals and appreciation of our commitment to uphold them.

The other aim (and equally important for our customers) is to continue to provide for you products of quality and reliability to support beekeepers to work their

hives sustainably and profitably for future generations to benefit. We seek to work closely with all our suppliers, both national and international to provide the best solution for you.

Our plea is: **If you are not satisfied with any product you purchase from us, please give us the opportunity to make it right.**

Contact us now on 0800 000 770 or (04) 232 7802 or email us on sales@hiveworld.co.nz or visit our website www.hiveworld.co.nz.

If you are in the Wellington region, call in to our shop at 16 Wall Place, Kenepuru, Porirua.

We are open 7.30am to 5.00pm Monday to Friday.

Contents



HIVEWARE 4

Hives	4
Hive Accessories	6
Paraffin Dipping	7
Hive Security & Wax Spraying	8
Frames & Frame Assembly	9
Paradise Hiveware	10
Paradise Nuc & Mates	12

HIVE MANAGEMENT 13

Queen Raising	13
Tools & Consumables	14
Bee Health/Feeders	15
Varroa Treatment	16
Beekeeper Protection	19
Smokers	23
Comb Honey	24

IN THE HONEY HOUSE 26

Harvesting	26
Uncapping	27
Extractors	28
Extracting Bundles	29
Honey Storage	30
Presentation	32
Wax Melters/Wax Presses	33
Candlemaking	34
Books, Gifts and Accessories	36

INDEX 38

Hive World Basic Starter Package

- 2-box hive paraffin dipped and painted with 20 x pre-coated plastic frames
- Top feeder with rim
- Hive mat
- Galv lid
- Paraffin dipped wooden base
- Entrance reducer
- Queen excluder
- Galv emlock hivestrap

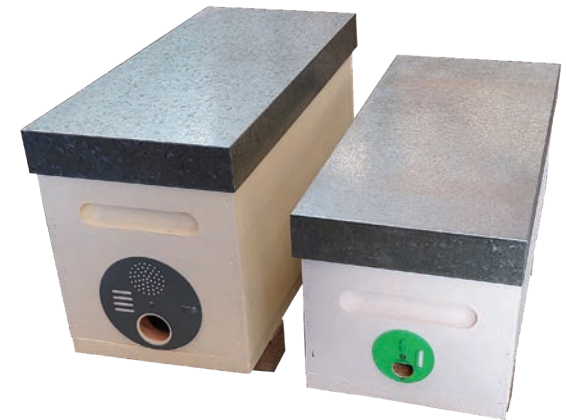


HW-BSTPKFD Hive World Basic Starter Package

HW-BSTPK3/4 Hive World Basic Starter Package 3/4 Depth

Hive World Nuc Box Package

- Galv hive lid
- Hive mat
- Assembled nuc box paraffin dipped and painted
- Nuc Disc: Steel for FD or Plastic for 3/4D



HW-NUBPKFD Hive World Nuc Box Package

HW-NUCPK3/4 Hive World Nuc Box Package 3/4 Depth

Ready-to-Go Super with 10 x Plastic Frames (Wax Sprayed)

Paraffin dipped and painted super with pre-sprayed plastic frames.



HW-RTGPFDF Ready-to-Go Full Depth Super

HW-RTGPF3/4D Ready-to-Go 3/4 Depth Super

Ready-to-Go Super with 10 x Wired Timber Frames and Wax Foundation

Paraffin dipped and painted super with wooden frames pre-wired and foundation applied.



HW-RTGWWFDF Ready-to-Go Full Depth Super

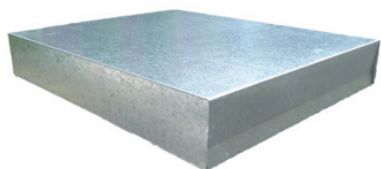
HW-RTGWW3/4D Ready-to-Go 3/4 Depth Super

BEE TIP:

When you do a split, put the frames of bees in your nuc a few days before you introduce the new queen. This gives time for the pheromones from the old queen to wear off so the new queen will be more readily accepted.

Galv Lid

- 0.55 gauge galvanized steel
- Regular lids 80mm deep, Nuc lids 50mm deep
- Sprung ends with flat sides



HNM-GSL55 Galv Sprung End Hive Lid 0.55mm

HNM-GNL50 Galv Nuc Box Lid

Hive Doctor Smart Base

- Triple Disc entrance with options
- Straight sides and ends for easy palletising
- Deep floor with great venting
- Dimensions: 53 x 40.5 x 5cm
- Future proof styling



HNE-HDBV2TD Hive Doctor Smart Base with Triple Entrance Disc

HNE-HDTV2 Pest trays

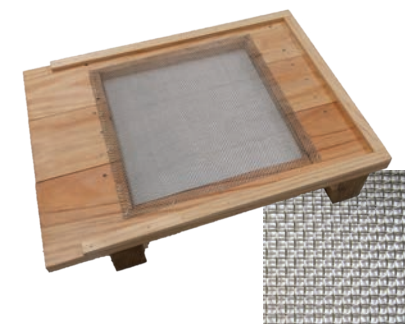
Hive Base Board



HNT-BBK Hive Base Board Kitset

HNT-BBA Hive Base Board Assembled and Paraffin Dipped

Ventilated Hive Base and Varroa Mesh



HW-VFB Ventilated Hive Base Assembled and Paraffin Dipped

HNX-8M Varroa Mesh - 330 x 370mm

Hive Mats



HNT-HM Hive Mat Assembled

HNT-HM40 40mm Rim Hive Mat Kitset

HNT-HMNUC Nuc Box Hive Mat

Commercial Grade Super Kitset



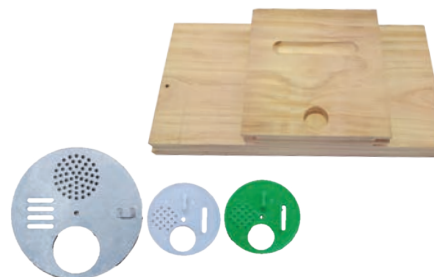
HNT-FDCS Full Depth Commercial Grade Super Kitset

HNT-3/4DS 3/4 Depth Commercial Grade Super Kitset

HW-PDP Assembled, Paraffin Dipped and Painted *extra charge per box

Nuc Box Kitset and Discs

Kitset includes sides & base untreated only.



HNT-NUCBX Nuc Box Kitset

HCM-E-3 Nuc Entrance Disc

HCM-E-6 Steel Nuc Disc

Hive Straps



HCM-B-14 Woven Polyester Hive Strap

HCM-B-15 Emlock Galv Hive Strap

Hive Gate

Code HNB-HG250-1

HiveGate positions the entrance right under the winter cluster position. This allows the bees to naturally control what comes in and goes out of the hive rather than intruders sneaking in undetected. Small, weak or under-stress colonies are empowered to defend themselves as the odds are stacked against intruders. Facing a cluster of bees is daunting to the most determined wasp.

HiveGate is:

- easy to install in a range of hive bases as well as nucleus hives.
- doesn't require continuous monitoring – set and forget.
- constructed from high quality, exceptionally durable, UV-protected plastic, therefore designed for a long service life.
- is chemical free and enables natural bee defence.

Advantages:

- Less robbing means stronger, more productive colonies because bees spend less energy defending the hive. Furthermore, fewer pathogens are passed on from intruders.
- Bees spend less energy on controlling the environment inside the hive therefore fewer colony losses.

From observation, bees behave naturally around the HiveGate and adopt it straight away.

www.hiveworld.co.nz

How does HiveGate work?

Position the internal entrance under the winter cluster (the largest concentration of bees in the hive). If an intruder enters the HiveGate and proceeds towards this internal entrance, it will encounter a barricade of bees.

Two things can happen:

1. The intruder gets cold feet and heads back out. This unsuccessful foray means no successful robbing communication to its home nest.
2. The intruder forces its way through the body of bees inducing a fear pheromone release that alerts the colony to its presence even in the dark. The bees will then track and attack the intruder inside the hive. The HiveGate prevents the intruder finding its way out of the hive. The attack is continued until the intruder is dead and afterwards disposed of through the HiveGate.



2 Box Paraffin Dipper

Code HWE-PWD2

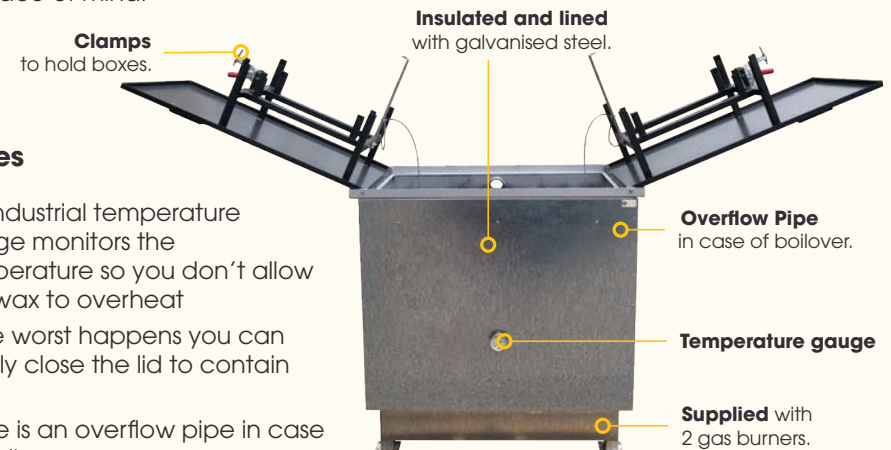
Dipping your own supers is a great way to preserve your hive ware and is easy to do in the quiet times during winter when you are sorting out your next season's hive ware. We recommend 4-5 minutes at 160°C.

Paraffin dipping is also an effective means of sterilizing your old hive ware as long as you dip it for at least 10 minutes at 160 degrees Celsius.

With Hive World NZ Ltd's Two Box Paraffin Dipper, you are getting a guaranteed solid NZ made product with great safety features for your peace of mind.

Features

- An industrial temperature gauge monitors the temperature so you don't allow the wax to overheat
- If the worst happens you can simply close the lid to contain fire.
- There is an overflow pipe in case of boil over
- The box is double lined with insulation.
- You are able to dip two boxes safely at a time
- There is no need to put your hands anywhere near the hot wax as the boxes are locked into position on the lid
- While two boxes are dipping, the other two are draining and you are able to paint them immediately to allow the maximum soak in for durability. This keeps one man fully occupied – no standing around waiting for things to do!



BEE TIP:

Always treat this task with respect.



[View online](#)

Entrance Reducer/ Mouse Guard

Code HCM-E-2

- Prevents mice entering hive
- Reduces entrance to help bees defend hive
- Reverse to close entrance for transport



Acrylic Hive Registration Stencil

Code HNA-ST



BEE TIP:

Every Hive must be registered and all supers sent for extraction must have the hive registration number on. Here is an economical, quick and easy solution for numbering your supers.

Note: We can cut a stencil to your design - please contact us for assistance.

Duoline Hot Wax Spray Gun

Code HGV-140-103

This is another task that you can do yourself to save money. With our Viseco German manufactured Hot Wax Spray Gun you can spray each frame in only a few seconds.

Control of your whole apiary without outside input is a great way to avoid importing problems and gives your workers occupation at times when they might not otherwise have jobs to carry out.

Features

- A lovely, even coat of your desired thickness is easily applied.
- Using your own wax is a great way to ensure hygiene and quality standards for your apiary - (you know what you are putting on and how much).
- Makes it worth while to clean and re-use your plastic frames
- Fully adjustable spraygun and temperature controls. Requires single phase power and a small air compressor



Queen Excluders



HCM-QE-5	Plastic Queen Excluder
HCM-QE-5A	Rigid Plastic Queen Excluder with Bee Space
HCM-QE-9	Galv Queen Excluder with Wooden Rim
HCM-QES-1	Queen Excluder Cleaning Shovel

Frame Perch

Code HCM-FP-1

Hang frames on side of hive during hive checks to keep them clean.



[View online](#)

BEE TIP:

Only use clean wax to avoid blockages.

Plastic Comb Foundations with frame



- HCM-FR-6 3/4 Depth Comb Foundation
- HCM-FR-7 Full Depth Comb Foundation
- HW-WS Wax spraying *extra per frame

Plastic Foundations

Sold in packs of 10.



- HCM-BS-5C Full Depth Plastic Foundation
- HCM-BS-5L 3/4 Depth Plastic Foundation
- HW-WS Wax spraying *extra per frame

Timber Frame assembled with wire



- HNM-TFAWFD Full Depth Timber Frame
- HNM-TFAW3/4D 3/4 Depth Timber Frame
- HNM-TKFD Kitset FD Frame
- HNM-3/4DDF Kitset 3/4 Frame

Brood Wax Foundation



- HNB-FDH Full Depth Heavy Brood Wax Foundation 212mm x 10
- HNB-FDM Full Depth Medium Brood Wax Foundation 212mm x 10
- HNB-3/4M 3/4 Depth Medium Brood Wax Foundation 157mm x 10
- HNB-FDT Full Depth Thin Brood Wax Foundation 212mm x 10

Brass Eyelets - 200g Bag

Code HCM-MS-E



Stainless Steel Frame Wire 500g

Code HCM-W-4



Heavy Duty Wire Crimper

Code HCM-WT-2



Embedders



- HCM-WE-1 Wheel Type Wire Embedder
- HCM-WE-3 Grooved Spur Embedder

EPS: EXPANDED HIGH DENSITY POLYSTYRENE

- EPS is non-toxic and totally inert
- Uses no CFC's or HCFC's
- Safe for food and medical storage
- From a bees perspective it is equivalent of a hive and a hollow tree, the large thermal mass gives excellent insulation properties

Paradise Hiveware

Paradise Hiveware from Finland has been sold in New Zealand for many years now and is a proven product with many advantages for your apiary.

- Beeboxes are manufactured from lightweight food grade and extra hardened EPS with a density greater than 100 kg to the cubic metre, providing an amazing strength to weight ratio.
- Tight fitting componentry added to their light weight and ease of stacking, makes life a lot easier in your apiary.

The Beebox system has a range of components to enhance the hive.

Regular supers hold 10 Langstroth frames (i.e. the same internal size as your regular Langstroth box).

Features

- Insulation is 6 x the value of standard timber boxes
- Improved overwintering- provides a warm dry environment that helps prevent nosema
- Faster spring buildup - a warmer hive means the queen can lay right up to the hive wall
- Increased honey production-Paradise hives consistently outperform standard timber hives by up to 30%
- Integrated top feeder system with plexiglass beesavers
- Varroa mesh floor
- Lightweight and easy to manage
- Adjustable entrance reducers
- Optional queen trap system to prevent swarming



View online



BEE TIP:

We recommend 2 coats of paint to protect your Paradise Hiveware from bees nibbling the polystyrene and the elements. This will ensure long life for your Paradise Hiveware.

Paradise Langstroth + 4 plastic lists



HFP-11855 Paradise Langstroth Full Depth Body

HFP-11949 Paradise Langstroth 3/4 Depth Body

Paradise Top

Code HFP-11964



Paradise Bottom + AL net (333 x 333mm)

Code HFP-11965



Paradise Entrance Reducer + 2 shutters

Code HFP-25A



Paradise Queen Excluder

Code HFP-21



Paradise Queen Trap System

Ensures Queen remains in the brood box thereby preventing swarming.



HFP-QTSE Paradise Queen Trap System - with excluder

HFP-QTSO Paradise Queen Trap System - without excluder

Paradise 10L Feeder

Code HFP-11866

Includes 1 x polycarbonate beesaver



BEE TIP:

When painting feeder, spread a light coat of sand on wet paint to give bees grip on the sloping edge.

Complete Hive with 2 x supers, Feeder and Queen Excluder



HFP-FDComp Complete Full Depth hive

HFP-3/4Comp Complete 3/4 Depth hive

Complete Paradise Nuc & Mate

The Paradise Nuc and Mate system is a 6-frame beehive.

Polystyrene construction keeps an ambient temperature in the hive in all seasons. This promotes early laying by the queen with the result that your hives are up and going as soon as the spring flow starts.

Features

- Comes with two entrances and by adding a divider, can be used to raise 2 x 3-frame nucs at the same time.
- Special top feeder has provision for two entrances.



[View online](#)

HFP-NMB	Complete Paradise Nuc & Mate (without feeder or division board)
HFP-NMF	Complete Paradise Nuc & Mate with feeder
HFP-NMFD	Complete Paradise Nuc & Mate with feeder and division board

Paradise Nuc & Mate Top, Bottom + Net



HFP-11883-02	Paradise Nuc & Mate Top
HFP-11883-01	Paradise Nuc & Mate Bottom + Net

Paradise Nuc & Mate FD Body & Division Boards



HFP-11885-01	Paradise Nuc & Mate FD Body + 4 plastic lists
HFP-31	Division Board

Paradise Nuc Feeder 5.5L

Code HFP-11934

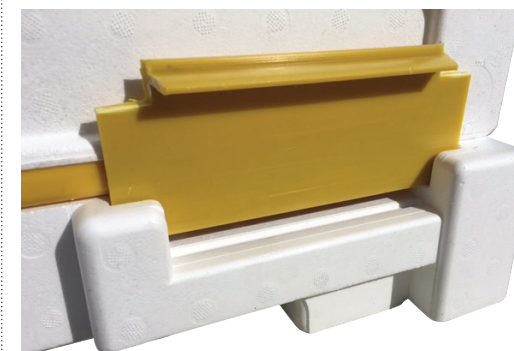
Includes 2 polycarbonate beesavers



Paradise Nuc & Mate Entrance reducer

Code HFP-T1327

Width: 145mm - 2 per bottom



Queen Marking Pen

Code HCM-MP-1

Colours available: Red, Green, Blue, White, Yellow

- Non-toxic, water based marking pen especially suited to marking your queen to enable you to always find her easily.
- Quick drying and low odour to cause the minimal disturbance to your precious princess!
- This is the easiest way to mark your queen – just a small spot on her thorax and you’re done.
- You can easily store your marking pen in your Hive World tool belt.

BEE TIP:

International Colour Coding
 - Year ending in
 0 & 5: Blue
 1 & 6: White
 2 & 7: Yellow
 3 & 8: Red
 4 & 9: Green



Swarm Attractant

Code HNB-SL

Swarm lure cupcakes with lemongrass.



Queen Catchers



HCM-QC-5B	Queen Mailing Cage
HCM-QC-6	Queen Catching Clip
HUT-Q0090	One Handed Queen Catcher

Grafting Tools



HCM-TL-2	Grafting Tool
HCM-TL-4	Chinese Style Grafting Tool

Queen Rearing kit



HCM-QRK-1-01	Nicot Style Queen Rearing Kit
HCM-QBS-789	Queen Cell Protector with Cell Holder & Support
HCM-QCHS	Queen Cell Holder & Support (Bag of 10)
HFT-904	Queen Cell Cups (Bag of 110)

Hambly Queen Dial

Code HNB-13HDP

- Keep an accurate record of where you are in the queen-raising cycle and tasks to do
- Clear diagrams and information for failsafe identification
- Printed on super durable material for long life



Bee Brush



- HCM-BB-1 Wooden Handle Bee Brush
- HCM-BB-2 Plastic Handle Bee Brush

Frame Grip



- HCM-FG-1 Frame Grip
- HCM-FG-3 Frame Grip with Manipulation Tool

Hive Tools



- HCM-HT-2 American Style Stainless Steel Hive Tool
- HCM-HT-3 Stainless Steel Pro Lift Hive Tool
- HCM-HT-7 American Kelly Style Hive Tool
- HCM-HT-8 Hive Tool with J Hook
- HCM-HT-9 Ripper Style Hive Tool
- HCM-HT-10 Pocket Size Hive Tool

Big Brute Hive Tool

Code HWE-BB

- The serious tool for serious beekeepers
- Ideal for separating supers at harvesting
- 310 mm long



“ Boxes prised apart with ease and hardly any damage to them or my back – Absolutely brilliant. ”



[View online](#)

Hive World Tool Belt

Code HWT-BB

The Hive World Beekeepers Tool Belt is the ultimate beekeepers accessory. The ultra-strong magnet holds your hive tool in place until required.

Takes hive tools up to 30mm wide (including our whopping Big Brute).

“ One of the best products I have purchased – I never misplace anything now. ”



[View online](#)

Compact Feeder

Code HCM-BF-1

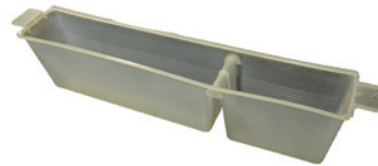
Complete with cage protector and 450ml beaker.



Two Compartment Feeder

Code HCM-BF-4

Suitable for half or 3/4 depth supers.



Portable Entrance Feeder

Code HCM-BF-5A

Use with screw top soft drink bottle or similar.



Mineral Bee

Minerals & Trace Elements For Bees

- 100% natural minerals, trace elements, amino and fatty acids for honeybees.
- Made from concentrated ocean minerals.
- For Bees has been scientifically proven to contain the same key minerals and trace elements as honey and pollen.
- Sugar syrup has very little nutritional value apart from carbohydrates however it is necessary for the feeding of bees when there is insufficient stores of honey available. For best results, we recommend all syrup fed to your bees has Mineral Bee added. Ratio 10ml to every litre of syrup.
- Always have drinking water available for your bees with Mineral Bee added (ratio of 10ml to 1 litre).

Full Depth Feeders

Because frame feeders are within the hive space, syrup is warmer and easily accessible to the bees.



HCM-BF-9 Full Depth 3L with Lid and Cages

HCM-BF-13 Full Depth 6L with Ladder and Cap

Top Feeders

- Easy to feed your bees without chilling the hive.
- Requires top feeder frame
- Includes bee-saver



HCM-BF-10 Top Feeder with Lid

HNT-1/3DS Top Feeder Frame



BEE TIP:
A bee water feeder or a saucer filled with marbles or stones makes an excellent bee-friendly drinking station.

Available in larger quantity if required - please contact us direct.

HAM-MB1L Mineral Bee 1 Litre

HAM-MB250 Mineral Bee 250ml

HIVE MANAGEMENT

VARROA TREATMENT

Beekeepers must be constantly vigilant to combat varroa.

It is essential to use a variety of regular treatments to keep the mites at a low level instead of allowing them a 6 month population explosion window as can happen when only carrying out the regular Spring/Autumn chemical options.

This multi-treatment approach is necessary now due to the increasing resistance varroa are building to the chemical compounds that originally hit them so effectively.

Hive World Varroa Check

Code HNW-VC

Simple to use method to calculate mite loads.



Here are our options -

THYMOVAR

For an alternative organic treatment we recommend Thymovar

- Thymovar contains the volatile oil "thymol".
- When treating, thymol vapour concentrations build up in the hive. This is highly toxic to varroa mites but safe for bees.
- This treatment is BioGro NZ certified and research has proven an 87-97% efficacy rate.
- Thymol is temperature sensitive and should be used when temperatures are between 12 and 30 deg Celsius



OXALIC VAPOURISERS

Two models are available, the Vapmite for hobbyists (3 minutes per hive) and the Sublimox for commercial operations (only 25 seconds per hive).

- This system sublimates the oxalic acid and pushes the treatment throughout the hive.
- Best done in the early morning or evening when the bees are in situ for the best results.
- Treatment needs to be repeated 4 times, 5 days apart (i.e. over 20 days) to catch the complete brood cycle.
- If you treat the hive when it is broodless (while the queen isn't laying) you only need to do one treatment to be 95% effective.
- Can also be used as a one off blast after removing strips to ensure a complete knockdown

Sublimox

- Commercial vaporizer
- Requires 230V/300W power from inverter or inverter generator
- Fast 30 seconds per hive treatment
- Works well with our oxalic tablets



HIM-SAPF+ Sublimox Professional APF Plus

HIM-ORSUB O Ring for Sublimox

HIM-TAPPO Process Cap for Sublimox

HIM-SCK Swinging Cap Kit

Vapmite Oxalic Acid Vaporiser

Code HCM-OAV-2

- 12 volt vaporizer
- Economical way of treating varroa



Oxalic Acid Anhydrous Tablets

Code HNV-OATAB

- Can use in all types of vaporisers
- Place one tablet per brood box in the vaporizer pan
- Sublimates straight from solid to gas without producing spurts of very hot liquid as plain oxalic acid dihydrate does
- Safer for the bees
- Pack of 100 in airtight container



BAYVAROL/APIVAR

The traditional Bayvarol/Apivar 6 month in-hive treatment.

- Simply place the recommended quantity of strips in each brood box in Spring and Autumn.
- Alternate your treatments to avoid building up resistance.
- Strips MUST be removed at the end of the treatment period.
- This treatment cannot be used two week prior or during the honey flow
- These synthetic treatments are the traditional backbone of varroa prevention.
- Alternate between them (use one in Spring before the honey flow and the other in Autumn after harvesting)
- Apivar contains Amitraz and Bayvarol contains flumethrin as their active ingredients.
- Carefully follow the instructions provided to ensure success.



HNB-APV-2 2 Strip Apivar

HNB-APV-10 10 Strip Pack of Apivar

HNE-BA-4 Bayvarol - 4 strip pack

HNE-BA-5X4 Bayvarol - 5 x 4 strip packs

BEEKEEPERS FRIEND/DRY WALL STRIPS

BKF or DWS strips are pre-cut and ready to soak in your own manufactured oxalic/glycerine mixture.

- Manufactured in USA specifically for oxalic/glycerine treatments.

- Place these strips in the brood box in the same way as the synthetic treatments.
- We advise checking after 4 weeks as they will probably need replacing due to the bees propensity to chew them up!

Beekeepers Friend/Dry Wall Strips



HNA-BKF100	Beekeepers Friend Pack of 100 strips
HNA-BKF2200	Beekeepers Friend 22kg Carton
HNA-BKF2200+5	Beekeepers Friend 22kg Carton x 5
HNA-DWS-300	Dry Wall Strips x 300

Glycerine



HND-GLY-2.2KG	2.2kg Bottle Glycerine
HND-GLY-6KG	6kg Bottles Glycerine
HND-GLY-25KG	25kg Pail Glycerine

Oxalic Acid Dihydrate



HNR-OXA350	Oxalic Acid 350g Jar
HNR-OXA750	Oxalic Acid 750g Jar
HNR-OXA4KG	Oxalic Acid 4kg pack
HNR-OXA25KG	Oxalic Acid 25kg bag

Oxalic/Glycerine Handy Packs

- 100 pack will treat up to 25 hives
- 300 pack will treat up to 75 hives



HW-OAGPK100	Oxalic/Glycerine Handy pack 100
HW-OAGPK300	Oxalic/Glycerine Handy pack 300

Oxalic/glycerine strips have been used extensively here over the last 3-4 years although it is still not possible to manufacture and market them legally as varroa treatment.

- Hive World sell all the components required to make your own, and considerable cost savings can be made using this method of controlling varroa.
- We advise you to do your own research and test your strips on sample hives before changing over completely.
- This treatment can also be used after traditional strips have been removed to ensure complete knockback before winter or before the honey flow (oxalic strips can be left in over honey flow if required)
- Place 4 strips in the brood box in the same way as traditional synthetic strips.





BEEKEEPER PROTECTION

Introducing Hive
World's own branded
beesuits

Made in India to European specifications.

Hive World Pro Beesuit

Code HIJ-B19

The Hiveworld Pro beesuit is a quality 65% cotton beesuit with all the practical features you would expect to find in a garment that you need to be comfortable wearing day after day. These beesuits are well made and topstitched for durability and we are pleased to offer such a sturdy suit for such a reasonable price.

They feature a 2-way zip up the front (except for Size XS) with comfortable elastic cuffs on the sleeves and zippered leg openings for easy access. Chest patch pocket and 2 front pockets as well as a hive tool pocket on the left leg give you plenty of storage space for necessities!



Check out our Multibuy Pricing options on all our beesuits (except childrens)!

Available in Sizes XS, S, M, L, XL, 2XL, 3XL



Hive World Pro Replacement Hood

Code HIJ-B19RH



Childrens Beesuits

Hive World is pleased to offer these quality children's beesuits for your child's protection. Ideal to allow the potential beekeeper to learn about the workings of the beehive at first hand.

Gives them the confidence to safely help out with tasks in the apiary and gain a lifelong appreciation of the value of beekeeping.

HCM-BC-21-1	Childrens Beesuits: Sizes 120cm/ 130cm/ 140cm
HIJ-B191XS	Childrens Hiveworld Pro Size 150cm 1XS
HIJ-B192XS	Childrens Beesuit Hiveworld Pro Size 160cm 2XS
HIJ-B19TXS	Junior Teen Hiveworld Pro Size 170cm



Beekeepers Vest

Code HUB-S21

Easy to add a safety dimension to your regular clothing!



HUB-S21	Beekeepers Vest
HIJ-RHVSS	Round Hood Veil

Hive World Ranger Beesuits

- Beautifully comfortable to wear
- Lightweight and cool polyester cotton
- Close weave for protection from stings and durability
- Upmarket styling with multiple pockets for practicality
- 2way YKK zipper on front
- Zippered leg entry with elasticated wrists and ankles for secure fit.



HIJ-B25 Hive World Ranger Beesuit - Khaki - Available in Sizes S, M, L, XL, 2XL

HIJ-B28 Hive World Ranger Jacket - Khaki - Available in Sizes S, M, L, XL, 2XL

Hive World Ranger Replacement Hood



Hive World Ventilated Beesuits

- Made from airy 100% polyester mesh, lightweight and comfortable
- Solid fabric reinforcing knees, shoulders and forearms.
- Ample pockets
- 2 way YKK zipper on front
- Zippered leg entry with elasticated wrists and ankles for secure fit.

BEE TIP:

Always remove and handwash beesuit hoods to extend their life. Beesuits are machine washable. Remember to wash before storing beesuit.

HIJ-B30 Hive World Ventilated Jacket: S, M, L, XL, XXL

HIJ-B40 Hive World Ventilated Beesuit: S, M, L, XL, XXL

Hive World Ventilated Replacement Hood



Check out our Multibuy Pricing options!

Regular Gloves

- Soft goatskin gloves allow good dexterity while working your hives
- Long cotton calico gauntlets.



HCM-BG-2S Childrens Gloves: Small

HCM-BG-2 Adults Gloves: Medium, Large, Xlarge, XXLarge

The Beekeeper Gloves

Code HIJ-B10

- Strong Buffalo hide gloves with sturdy cotton calico gauntlets
- Size available: 7, 8, 9, 10, 11, 12



Ventilated Gloves

Code HCM-BG-4

- Goatskin gloves with ventilation panel
- Long cotton calico gauntlets
- Size available: L, XL, 2XL



BEE TIP:

Prevent transfer of disease by washing gloves between colony examinations.

Washable Leather Gloves

Code HFP-360BHBE

- Top Quality French made beekeeping gloves
- Beautiful leather will last for years
- Our best buy style
- Size available: 5, 6, 7, 8, 9, 10, 11, 12



Check out our Multibuy Pricing options on all our gloves!

Apifuge Smoke Alternative

Code HFT-915

This aerosol product is useful as a calming spray:

- Spray on your arms and clothing if you have not got your beesuit on or you are dealing with an extra angry crowd of bees.
- Ideal for situations where it is not safe to wear face protection veil e.g. helicopter pilots transferring hives or similar situations.
- Useful to have a can on hand when transporting bees by truck as well.
- Do not spray directly onto bees.



[View online](#)



SMOKER RULES

- Always light smoker before putting on gloves and veil to avoid burning holes in them.
- Bigger smokers are easier to light and burn longer.
- Use dry fuel: cardboard, eggboxes, hessian sacking, rotten timber, straw pellets, cotton waste, hay, pine needles
- Light small card and drop in to empty smoker. Add dry fuel and pump bellows to draw air in
- Continue pumping for a couple of minutes, occasionally shaking smoker to settle fuel
- Once it is burning steadily, top up with fuel.
- The smoke should be cool and smell pleasant – mimicking woodsmoke. If it is acrid or eye-watering, change your fuel.
- Once lit, smoker should burn for hours with minimal attention.
- If it is burning too quickly, kick smoker on its side or plug with green grass to starve it of air.

Large Bee Smoker

Code HCM-S-1L

Large 19.5cm barrel height



European-Style Smoker with inner tank

19cm barrel height.



HCM-S-9M European-Style Smoker with inner tank

HCM-S-13 Replacement Smoker Inner Tank

Stainless Steel Smoker 25cm

Code HTC-10028

- 25cm barrel height with guard and vinlex bellow.
- Made in Turkey.



HIVE WORLDS APIBOX SYSTEM

- A full depth frame with 24 x food grade PET containers (supplied with little clip together lids) which you place in your super.
- These European made packets provide a neat gift or saleable product when filled.
- Once you have the frame, you can purchase refills every year to continue to produce these delightful dessert treats.



HIVE WORLDS ENGLISH COMB SECTION PACKAGE COMPLETE

- Specially constructed half depth super filled with 28 square wooden comb sections
- Produces premium honeycomb in a natural wood frame 108 x 108mm
- Produces premium honeycomb in a natural wood frame
- Supplied with thin wax foundation for inserting in the section, cellophane bags, and cardboard section cases for selling and display purposes



Apibox

- Full depth frame with 24 PET inserts with clip on lids
- Holds 125g comb honey +
- Pre-sprayed for bees convenience!
- Refills can be purchased separately

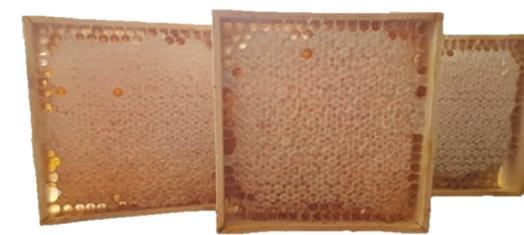


HCA-APIMAX Apibox Frame with 24 plastic boxes

HCA-APIBOXREF Plastic Apibox Refills x 24

English Comb Section Package Complete

- The traditional method of producing comb honey
- Contains all products listed below as well as 2 x clips and plywood braceboard



HUT-M7007 4-Section Plastic Dividers x 8

HUT-P100328 English Wooden Comb Honey Sections x 28

HNC-HCB28 Cardboard Section Cases x 28

HW-ECSP Hive World Section Rack Complete Package

HNH-PLCELU6 Cellophane Bags x 28

HNB-CS28 Beeswax for Section Cases x 28



HIVE WORLDS COMB HONEY FRAME

- A ¾ depth frame with 8 x 250g plastic sections.
- We supply this package with covers as well as the thin wax foundation cut to size.
- A very economical, easy way to start your comb honey journey.
- Full Depth frame with 12 x 250 gram plastic sections



COMB HONEY PRODUCTION

- Light coloured clover/pasture honey is best for comb honey.
- Only use the strongest hives and start with the main honey flow
- When the flow starts, take out all partly filled frames or supers and put your cassettes/section rack on.
- Remove comb honey as soon as it is capped.
- Put in freezer to kill any wax moth eggs.
- REMEMBER: No comb honey to be produced after 31st December in the Upper South or North Island.

Comb Honey System

- Available as both ¾ and Full Depth options
- ¾ contains 8 x 250g cassettes
- Full Depth contains 12 x 250g cassettes
- Supplied with pre-cut foundation
- Refills available



HW-CHS8 Hive World Comb Honey System - 8 x 250g Section Complete - 3/4 Depth

HCM-CH-05X8 250g Plastic Comb Honey Cassettes x 8 refill

HW-CHS12 Hive World Comb Honey System - 12 x 250g Section Complete - Full Depth

HCM-CH-05X12 250g Plastic Comb Honey Cassettes x 12 refill

HNB-CS08 Beeswax for 250g x 8

HNB-CS12 Beeswax for 250g x 12



Clip Frame for Comb Foundation

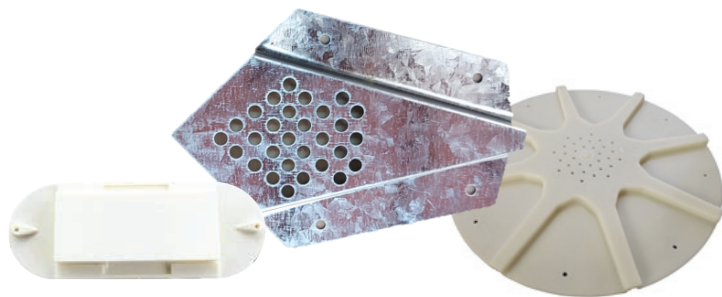
- Easiest way to start doing comb honey.
- No wires to worry about
- Cut comb to desired shape
- Available in carton of 40 for multibuy price



HCM-FR-3-03 Plastic Quick Clip Frame for Comb Foundation

HNB-FDT Full Depth Wax Foundation Thin Brood 212mm x 10

Bee Escape



HCM-ES-1 Plastic 8-Way Bee Escape

HCM-ES-2 Plastic Porter Bee Escape

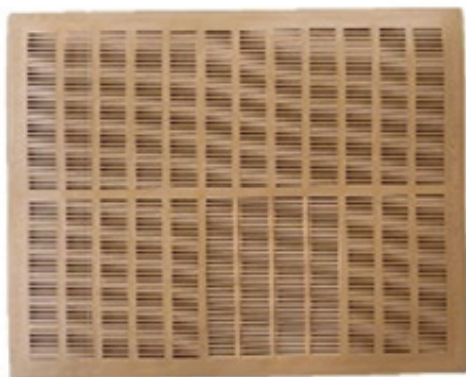
HCM-ES-4 Metal Bee Escape

Flexible Propolis Mat

Code HCM-PC-1

Collect propolis from your hive.

- Easier to remove when frozen – simply flex the mat to remove propolis.
- It is advisable to do this in a large plastic bag so you catch it all!



Escape Boards



HNT-EB8P 8-Way Assembled Escape Board

HNT-EB2M Escape Board with 2 x Metal escapes

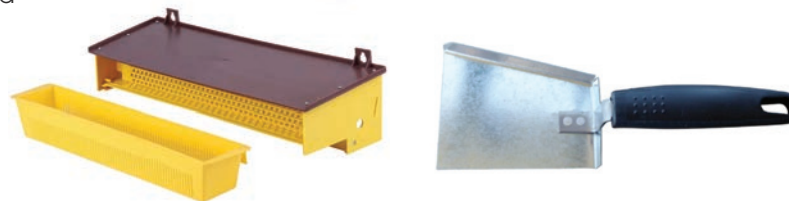
HNT-EB4M Escape Board with 4 x Metal escapes

Pollen Trap and Shovels

- Easy way to harvest pollen – attach to entrance of hive for two-week cycles in the spring
- Store collected pollen in freezer or dry thoroughly to prevent mould

BEE TIP:

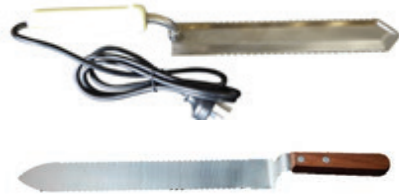
Ensure bees can collect enough for their own needs first!



HCM-PT-6 Pollen Trap

HCM-PS-1 Pollen Shovel

Uncapping Knife



HCM-HS-4 Serrated Uncapping Knife

HCM-HS-6 Electric Uncapping Knife

Plastic Handle Capping Scratcher

Code HCM-HS-5

Also useful for checking your brood health.



Uncapping Roller

Code HCM-HS-7

Essential for extracting manuka honey.



Turbo-Pro Uncapper

Code HCM-HS-15

The neatest uncapper on the market.



Double Stainless-Steel Honey Strainer

Code HCM-ST-1



Nylon Strainer

Code HCM-ST-2

- Can hang wax cappings in extractor to get the last of your honey
- Ideal for straining your beeswax to remove residues



Uncapping Tray with Full Depth Holding Tank and Honey Gate

Code HCM-MS-UT-03

- Holds your frames at the ideal angle for uncapping
- Large size tank with lid can carry frames from the hive for uncapping (keeps safe from bees)
- Stainless tray allows surplus honey to drain from wax cappings.
- Honey gate to easily drain honey out.



Manual Extractor



HCM-EX-02S 2-Frame Manual Extractor

HCM-EX-06S 4-Frame Manual Extractor

4-Frame Electric Extractor

Code HCM-EX-07S

- Tangential Extractor
- Best style for Manuka honey extraction



4-Frame Electric Extractor and Uncapping Tank

Code HTC-50402

- Two products in one.
- 10 frame uncapping tank
- No-mess extraction set-up
- EU quality – Made in Turkey



8-Frame Self-Turnable Radial Extractor

Code HTC-40070

- EU quality – Made in Turkey
- Saves extra handling of your frames
- Perfect for Manuka extraction



BEE TIP:

Get in touch if you are interested in bigger models as we have access to these as well and will be happy to quote for you on your requirements.



Uncapping Tank

- Excellent product for small to medium operations
- Holds 20 frames and allows you to uncap directly into the removable capping strainer.
- Honey gate for draining honey
- Optional Vertical Electric Uncapper for fast easy operation
- EU quality – Made in Turkey



View online

HTC-50034 20 Frame Uncapping Tank

HTC-50334 Vertical Electric Uncapper

Hive World's Extracting Bundle

Code HW-EXB

Original with 2-Frame Extractor includes:

- Uncapping Tray
- Pail with honey gate
- Double stainless-steel strainer
- Uncapping knife
- Cappings scratcher



[View online](#)



Premium Extracting Bundle

Code HW-PEXB

Our Premium Extracting Bundle with a 4-Frame Manual Extractor includes:

- 2 x pails, 1 with honey gate
- Double stainless-steel strainer
- Uncapping tray
- Uncapping knife
- Cappings scratcher
- 10 pack of 400ml honey jars
- 1 x pail perch.



[View online](#)



Honey Pails

- 20L Food Grade plastic pail
- Manufactured in NZ
- Your choice of plain or with honey gate



Pail Perch

Handy pail perch allows hands-free drainage

HCM-PP-1	Pail Perch
HNI-PWL-20L	20 L Honey Pail with Lid
HNI-PWL-20LHG	20L Honey Pail with Lid and Honey Gate

50kg Stainless Steel Honey Tank with water jacket heater

Code HCM-MS-HT-13

The safest way to warm your honey or even melt wax without risk of overheating.



BEE TIP:

Can hold 20L pail of honey for de-crystallising or place your crystallised honey jars in tank without having to empty them!

It is wise to store honey in a container that is easy to warm as honey tends to solidify on standing especially as the weather cools.

Warmer honey certainly flows a great deal faster!

Our honey tanks with water jackets will warm your honey gently but effectively when needed. If you are concerned about crystallization or prefer more solid honey on your toast, creaming is an ideal solution. We can supply creamers for large containers but for a regular 20L bucket a stainless steel paint mixer attached to your drill will do the job.

Stainless Steel Honey Tank with Filter and Honey Gate

- Perfect for storage and settling your honey.
- EU quality - Made in Turkey to both the Creaming Machines and the Stainless Steel honeytank with filter and honeygate.



HTC-50002	50kg Stainless Steel Honey Tank
HTC-50061A	75kg Stainless Steel Honey Tank
HTC-50007B	100kg Stainless Steel Honey Tank
HTC-50004B	150kg Stainless Steel Honey Tank
HTC-50012	225kg Stainless Steel Honey Tank

Honey Creaming Machine with Double Walled tanks

- 2kw heating element with thermostat
- Programmable mixer
- For creaming tips visit our website.



HTC-53075	75KG Honey Creaming Machine with Double Walled tank
HTC-53150	150KG Honey Creaming Machine with Double Walled tank

TO CREAM HONEY:

Simply seed your honey with 10% volume of creamed honey (either specially purchased or from your last years stock) and mix well but gently to avoid aerating.

Leave for 2 weeks in cool storage and it will be ready.



Perfection Honey Gates

- The original Perfection Honey Gate developed and manufactured by Thomas Apiculture in France
- Sturdy, food-grade plastic with drip-cutter system for no-mess pouring
- Large ergonomic handle makes for better control
- Large 50/60mm size is ideal for drums



[View online](#)



HFT-8100	Perfection Honey Gate with Seal and Nut 33/42mm
HFT-8200	Perfection Honey Gate with Seal and Nut 40/49mm
HFT-8300	Perfection Honey Gate 50/60mm

Nylon and Stainless Steel Honey Gates



HCM-HG-1	Nylon Honey Gate 32/45mm
HCM-HG-2	Italian Style Honey Gate 39/47mm
HCM-HG-4	Stainless Steel Honey Gate 37mm inner

Square or Hex PET Jars

- Quality NZ made food grade plastic sold in packs of 10 (200 and 400ml) or 4 (750ml)
- Sealing lids



HNK-200SQ	Square PET Jars 200ml x 10
HNK-400SQ	Square PET Jars 400ml x 10
HNK-750HX	Hex PET Jars 750ml x 4



Kraft Paper Bags x 6

Code HFT-1153

260mm wide by 320mm high.



Jute Bags

- Natural hessian material
- Strongly sewn together
- Clear plastic windows for showcasing your product
- Multi-buy pricing



HIJ-2X500 Two Jar Jute Bag, 500g jars

HIJ-3X250 Three Jar Jute Bag, 250g jars

HIJ-3x500 Three Jar Jute Bag, 500g jars

Honeycomb Packaging

Designed specifically for our English Comb Sections (see page 22-3).



HNC-HCB28 Cardboard Honeycomb Boxes x 28

HNH-PLCELU6 Cellophane Bags x 28

Plastic Bee Pins, Puzzle and Poster



HUT-G0133 Plastic Bee Pins - Pack of 10

HNL-CVPZL-BEE Jigsaw

HNL-CVWRAP-BEE Poster

Bee Motif Ribbons

- 63mm wide, wired



HUT-G0150 10mm Bee Motif Ribbon per metre

HUT-G0151 24mm Bee Motif Ribbon per metre

HUT-G0004 Hessian Bee Ribbon per metre

Gift Wrap



HUT-G0171 White Bees Wrapping Paper per sheet

HUT-G0955 Yellow Buzzing Bees Gift Wrap per sheet

Wax Melters

Larger Wax melters available on request from Thomas Apiculture –

See our website for details.



[View online](#)

HAA-WXM-35BD	35L Wax Melter with Digital Control
HAA-WXM-25BD	25L Wax Melter with Digital Control
HAA-WXM-15BD	15L Wax Melter with Digital Control
HAA-WXM-15CD	15L Candle Wax Melter with Digital Control
HAA-WXM-7CD	7L Candle Wax Melter with Digital Control and Insulation Wrap



Wax Melting Pot, Double Skin with lid

- Stainless steel
- 1.5 and 2.5L are suitable for induction as well as regular cooktop
- Gentle heating keeps your wax in the best condition
- Easy to pour



HCM-HM-12A	Wax Melting Pot 900ml Double Skin with lid
HUT-G8330	Wax Melting Pot 1.5L Double Skin with lid
HUT-G8335	Wax Melting Pot 2.5L Double Skin with lid

Stainless Steel Wax Press

Code HCM-WP-8

- Traditional economic way to get the last of the honey from your wax cappings
- Great when extracting Top Bar hives
- Also suitable for crushing fruit



Mini Cappings Spinner

Code HFT-358

- Easy to use, clean method of recovering honey and wax from your cappings.
- This model takes up to 10kg of cappings. Larger sizes available on request
- Made in France by Thomas Apiculture



Wax Press

- Available ex Paradise Honey in Finland
- P50 = 50kg /hour output, P100 = 100kg/hour etc.



HFP-P50	P50 Wax Press
HFP-P100	P100 Wax Press
HFP-P200	P200 Wax Press
HFP-P350	P350 Wax Press
HFP-P500	P500 Wax Press
HFP-P1000	P1000 Wax Press

CANDLEMAKING

If you have spare wax and are wanting to make beautiful gifts to sell or give to friends, candles are a lovely way of enjoying the health benefits of beeswax.

Our Scottish made silicon moulds -

- Will last you for many years if handled with care.
- It is easy to make beautiful candles with these moulds: Watch the instructional video on our website to give you confidence.

We also stock the accessories to assist the process:

- Candle wicking of the correct size for each candle mould
- Wick holders to ensure the wick is held steady while the mould is setting.
- Wicking needles are useful for pushing the wick through the hole at the base
- We now supply little wick sustainers to use with tealight moulds or to place in any container you wish to fill with wax to use as a candle.

5m Candle Wick



HUT-G8550	5m Candle Wick No. 0
HUT-G8551N	5m Candle Wick No. 1A (3/4")
HUT-G8552	5m Candle Wick No. 2
HUT-G8553	5m Candle Wick No. 3 (1 1/4")
HUT-G8554	5m Candle Wick No. 4 (1 1/2")
HUT-G8555	5m Candle Wick No. 5 (1 3/4")
HUT-G8556	5m Candle Wick No. 6 (2")
HUT-G8557	5m Candle Wick No. 7
HUT-G8558	5m Candle Wick No. 8
HUT-G8559	5m Candle Wick No. 9
HUT-G8570	5m Candle Wick No. 10

Candlemaking Accessories



HUT-G8005	Wicking Needle
HUT-G9102	Wick Holder
HUT-G9118E	Wick Sustainer Bag of 25

Beeswax

BEE TIP:

Beeswax candles burn brighter and cleaner than paraffin candles and they emit negative ions that purify the air.



View online



- Beautiful, pure, natural New Zealand beeswax.
- We supply beeswax in 80 or 250 gram blocks. This is a convenient size to use in candlemaking, polishes or for cosmetic purposes.
- An essential ingredient to use in the making of various cosmetics as well as skincare products.

HW-BW250G	250g Beeswax
HW-BX80G	80g Beeswax

Candle Dipping



HUT-G8301	Candle Dipping
HUT-G8302	Dipping Tank

Square Honeycomb

Code HUT-G0015



Table with Bees

Code HUT-G0042



Meadow

Code HUT-G0060



Honeycomb Sunflower with Bee

Code HUT-G8624



Plain with Bees

Code HUT-G8644



Tall Hex Honeycomb

Code HUT-G86779



Christmas Tree

Code HUT-G8684



Small Poinsettia

Code HUT-G86843



Pine Cone

Code HUT-G86880



X-Large Plain

Code HUT-G86983



Twisted Table

Code HUT-G86986



Honeycomb Globe

Code HUT-G8757



Honeycomb Tealight

Code HUT-G8800



Egg

Code HUT-G88500



Small Vintage Skep

Code HUT-G9400



Heart Tealight with Bee

Code HUT-G9423



Medium Round Tealight

Code HUT-G9449



Hexacomb with Bees

Code HUT-G9764



Bubble

Code HUT-G9800



Beekeeping Books



HNA-API-BK	Starting with Bees
HNA-CV-BK	Control of Varroa
HNA-AFB-BK	Elimination of AFB
HUT-B2911	Bees at the Bottom of the Garden
HNM-PBKNZ	Practical Beekeeping in New Zealand
HUT-B7031	Insects Bites and Stings
HNC-ABYBK	A Beekeepers Year
HNC-MBK	Manuka
HUT-B6101	The Honey Cookbook

Kids Activity Books



HUT-B1001	ABC Colouring Book
HUT-M9010	Secrets of the Beehive
HUT-M9012	Cardboard Model Hive

Tea Towels



HUT-G0083	Tea Towel: Bees and Hive
HUT-G2050/5	Tea Towel: Hug Rug Brand
HUT-G0352	Tea Towel: Queen Bee of the Kitchen
HUT-G0373	Tea Towel: Twin Pack English TableWare
HUT-G0963	Tea Towel: Alex Clarke

Honesticks Colouring Books and Crayons

- Made in New Zealand
- 100% Beeswax
- Ideal for Toddlers through to age 6 years
- Colouring Books are made from 100% recycled paper



HNH-CBNZ	Honesticks Colouring Book - New Zealand
HNH-CBES	Honesticks Colouring Book - Endangered Species
HNH-HSO	Honesticks Originals 12 pack
HNH-HST	Honesticks Thins 8 packs

Bee Stationery



HUT-G001424	Bee Pencil
HUT-G0027	Yellow Bee Pen

Magnets and Keyrings



HUT-G082	Fridge Magnets: You're the Bees Knees/Don't Worry Bee Happy/Beesotted/Let's Get Fizzicle
HUT-G083	Key Rings: Beesotted/HouseSwarming/Let's Get Fizzicle
HUT-G0550	Smoker Keyring with Light

Bee Patterned Umbrella

Code HUT-G0016



Hexagonal Soap - Honey or Propolis 25g

Code HFT-526/7

- French made soap
- Excellent for sensitive skin
- Beautiful fragrance



Wooden Hangers

Code HUT-G086

Bee Happy/Don't Worry Bee Happy/Welcome/Make Today/Bees Knees



Bee Happy Honey Pot with Lid and Server

Code HUT-G0362

English Tableware Company.



HUT-G0362 Bee Happy Honey Pot with Lid and Server

HUT-G0139 Wooden Honey Server



N					
Nicot-Style Queen Rearing Kit	13	Plastic Frames	9	Stainless Steel Honey Gate	31
Novelty Fridge Magnets	36	Plastic Frames for Comb Honey	25	Stainless Steel Strainer	27
Novelty Keyrings	36	Plastic Jars: 200g/400g/750g	31	Starter Package	4-5
Novelty Bee Ribbon	32	Pollen Shovel	26	Stencil for Hive Numbers	8
Novelty Soaps	37	Pollen Trap	26	Strainers: Nylon/ Stainless Steel	27
Nuc Box Kitset	6	Pro-Hook Hive Tool	14	Sublimox	17
Nuc Box Package	5	Propolis Mat	26	Supers: Full Depth/3/4 Depth	5-6
Nuc Entrance Disc	6	Propolis Soap	37	Supplement for Bees: Mineral Bee Swarm Attractant	15
Nylon Honey Gate	31	Q			
Nylon Strainer	27	Queen Catchers	13	T	
		Queen Cell Cups	13	Tea Towels	36
O		Queen Cell Protector	13	Tealight Candle Moulds	35
One-Handed Queen Catcher	13	Queen Excluders	8	Thymovar	16
OVA Board Strips	18	Queen Excluder Cleaning Shovel	8	Timber Frames	9
Oxalic Acid Treatments	17-18	Queen Mailing Cage	13	Tool Belt	14
Oxalic Vaporisers	17	Queen Marking Pens	13	Top Feeder	15
		Queen Rearing Kit	13	Turbo-Pro Uncapper	27
P		Quick Clip Frames for Comb Honey	25	U	
Pails with or without Honey Gates	30			Umbrella	37
Pail Perch	30	R		Uncapping Knife	27
Paper Bags	32	Ranger Beesuit/Jacket	21	Uncapping Roller	27
Paradise Top Feeders	11	Ready-to-Go Box and Frames	5	Uncapping Scrapers	27
Paradise Hiveware	10-12	Ribbon: Bee Motif	32	Uncapping Tank	27-28
Paradise Nuc & Mates	12	Ripper Hive Tool	14	Uncapping Tray	27
Paradise Queen Trap System	11	S			
Paraffin Dipper	7	Scrapers: Uncapping	27	V	
Pencil	36	Smoke Substitute	23	Vaporiser	17
Perfection Honey Gate	31	Smokers	23	Varroa Check	16
PET Jars: 200g/400g/750g	31	Soaps: Gift	37	Varroa Mesh	6
Plastic Bee Pins	32	Spinner for Wax Cappings	33	Varroa Treatments	16-18
Plastic Foundation	9				
				Ventilated Hive Bases	6
				Ventilated Beesuits	21
				Ventilated Gloves	22
				Vertical Electric Uncapper	28
				Viseco Hot-Wax Spray Gun	8
				W	
				Washable Leather Gloves	22
				Wax Cappings Spinner	33
				Wax Foundation	9
				Wax Melters	33
				Wax Press	33
				Wax Spray Gun	8
				Wick Holder	34
				Wick Sustainers	34
				Wicking Needle	34
				Wire Crimpers	9
				Wire Embedders	9
				Wooden Honey Server	37
				Woven Polyester Hive Straps	6



16 Wall Place, Porirua
sales@hiveworld.co.nz
Freephone 0800 000 770

www.hiveworld.co.nz